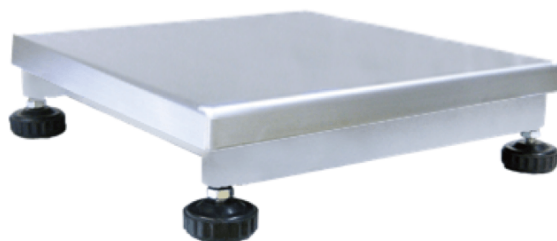


## Technical specifications

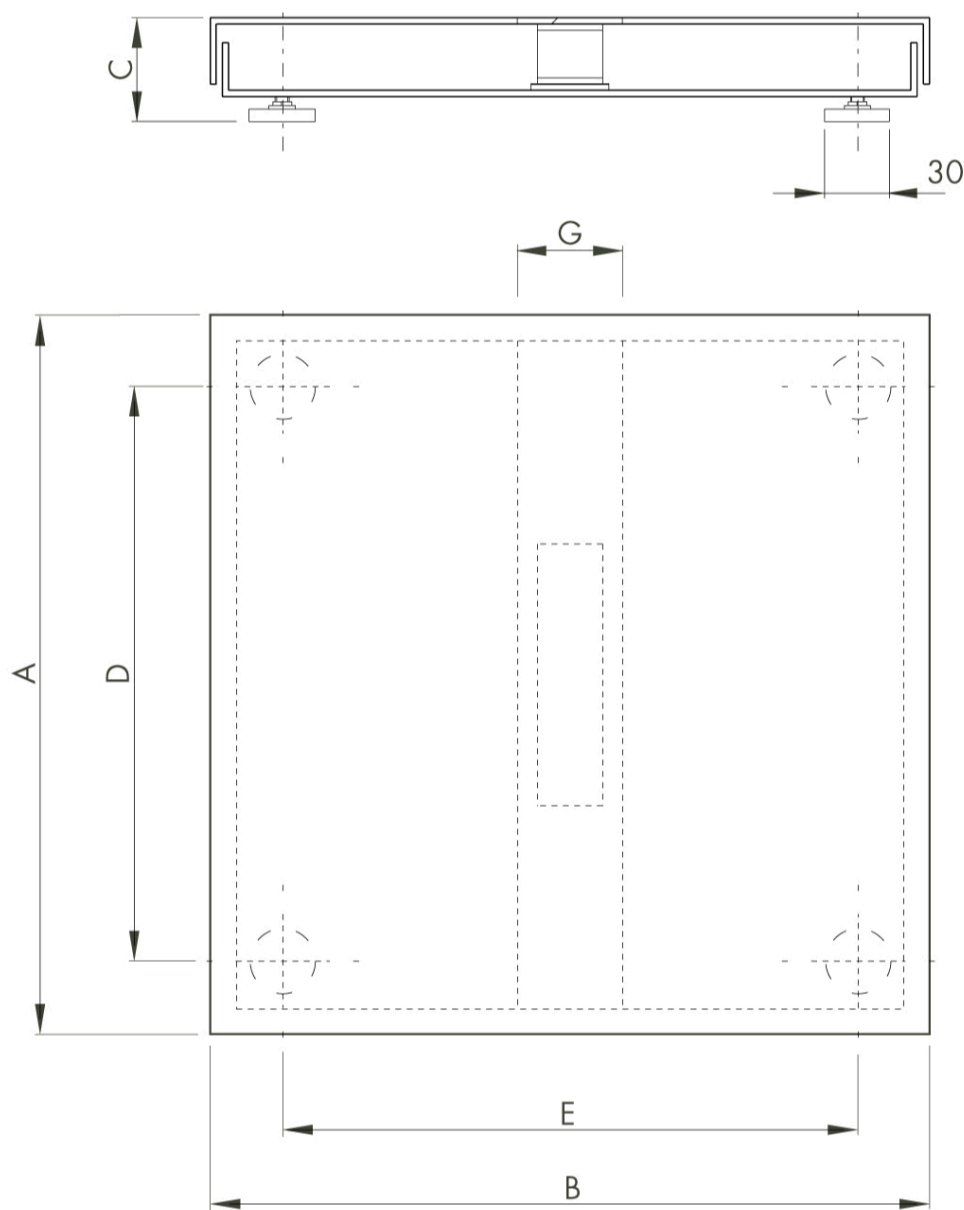
PWS36420250604

The PMI product is a platform that can accommodate a single load cell; this allows to guarantee precise results even where the load is not precisely centered. The single cell weighing platform is the most widespread solution in many industrial and commercial applications. The PMI platform rests on 4 articulated feet and adjustable in height and has a connecting cable to the weight indicator with a standard length of 3 m. The PMI monocell palettaforma adapts to the customer's needs and is available in other special versions.

<b>Rated load (RL):</b>	3 ÷ 300 Kg
<b>Combined error:</b>	0.03 % RO
<b>Safe overload:</b>	150 % RL
<b>Transducer input voltage:</b>	3 ÷ 15 Vdc
<b>Rated output RO:</b>	2 mV/V



All indicated data may be changed without notice.  
All the measures indicated are expressed in millimeters (mm).



MODEL	RATED LOAD (KG)	A	B	C	D	E	G
PM 0/i	3-6-15	200	200	60	150	150	50
PM 1/i	6-15-30	300	300	60	250	250	50
PM 2/i	15-30-60-150	400	400	120	340	327	50
PM 3/i	30-60-150	500	500	135	440	427	80
PM 4/i	60-150-300	600	600	135	540	527	80
PM 5/i	60-150-300	700	700	135	640	627	80
PM 6/i	60-150-300	800	800	135	740	727	80

All indicated data may be changed without notice.  
All the measures indicated are expressed in millimeters (mm).