

## Technical specifications

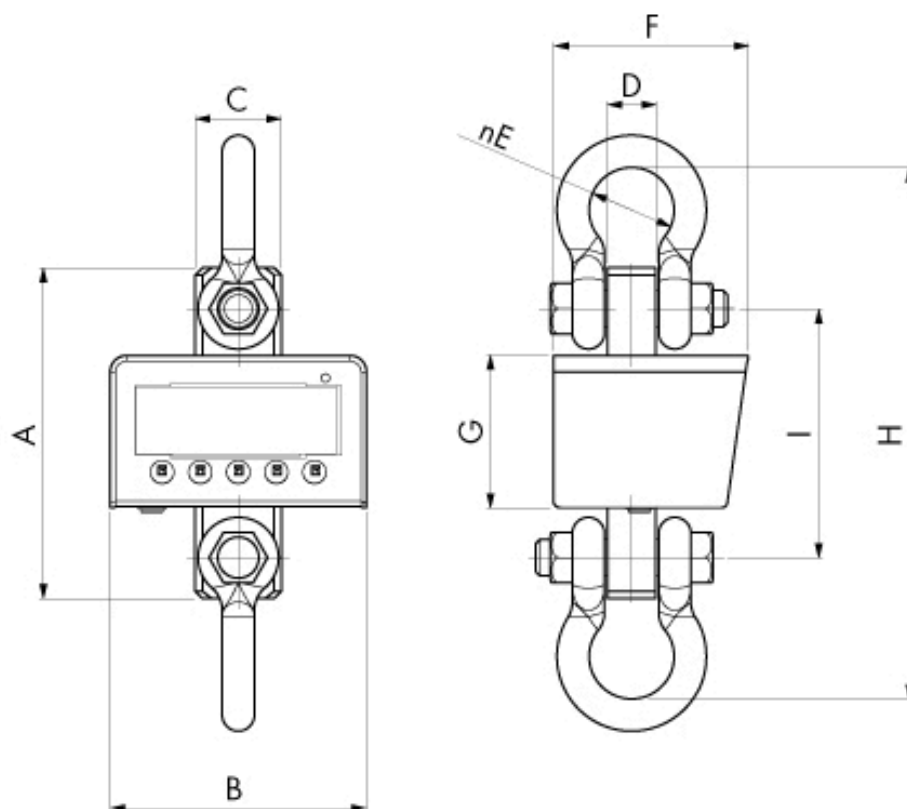
PWS16920250730

The CS05 dynamometer is an industrial weighing solution designed for high capacity mobile weighing. The CS05 dynamometer can be used both in warehouses and hostile industrial environments. Due to its characteristics, the CS05 dynamometer is used especially in the steel, mechanical and food industries, where it is necessary to weigh significant suspended loads in terms of weight. The CS05 dynamometer consists of a painted steel structure and is equipped with an infrared remote control, standard approved galvanized shackles, programmable digital filter, 5-key waterproof keyboard and adjustable light intensity.

<b>Display:</b>	Backlit 25mm LCD
<b>Temperature range:</b>	-10 ÷ 40°C
<b>Filter:</b>	Programmable
<b>Power supply:</b>	4 AA size battery , even rechargeable, 40 houRS battery life
<b>Calibration:</b>	Programmable by keyboard or PC
<b>Accuracy full scale:</b>	±0.03 % RL

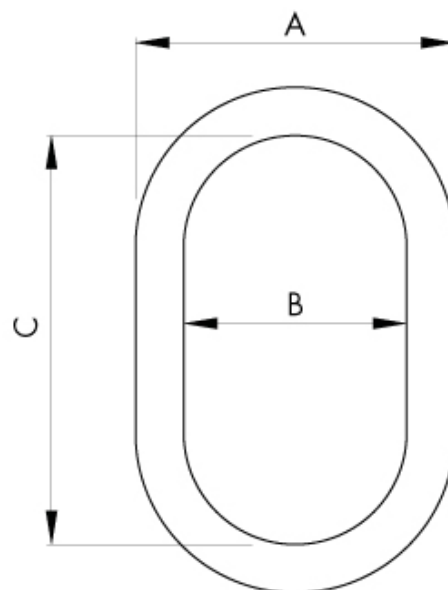
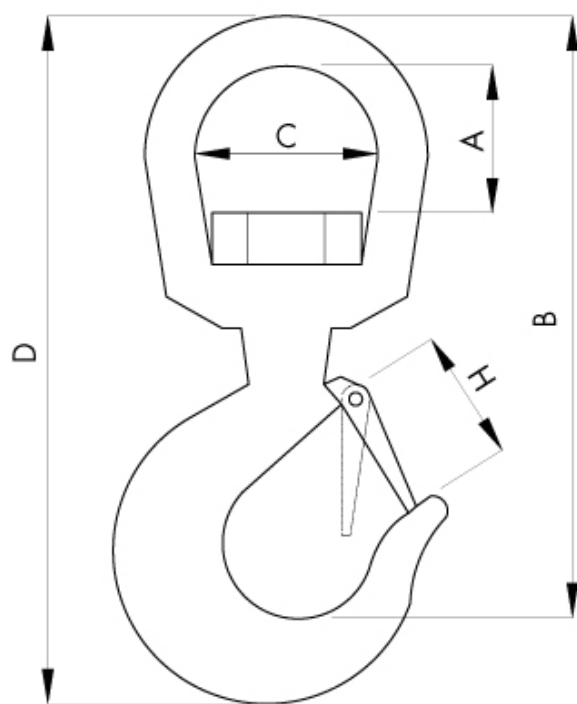


All indicated data may be changed without notice.  
All the measures indicated are expressed in millimeters (mm).



MODEL	WEIGHT	A	B	C	D	E	F	G	H	I
CS05T1	6	193	175	49	24	44	133	104	330	153
CS05T6	10	226	175	59	37	58	133	104	363	170
CS05T11	15	246	175	80	46	74	133	104	430	180

All indicated data may be changed without notice.  
All the measures indicated are expressed in millimeters (mm).



#### ACCESSORI OPZIONALI

MODEL	RANGE	A	B	C	D	H
GG1T5	1.5 t	53	164	47	207	30
GG7	7 t	84	315	90	410	48
GG15	15 t	95	354	96	455	63

MODEL	RANGE	A	B	C
CA2	2 t	86	60	110
CA8	8 t	152	100	180
CA15	15 t	174	110	200

All indicated data may be changed without notice.  
 All the measures indicated are expressed in millimeters (mm).