

General information

PWS1620251216

The PTS shear beam load cell, made of stainless steel, has excellent precision and linearity and it is resistant to lateral loads exceeding 50% of the rated load (RL). The PTS cell has been designed for weighing tanks, hoppers, belts, platforms, single-cell systems, suspended loads and automatic packaging machines and is usually used in the food, chemical, pharmaceutical, plastic and metallurgical sectors. The PTS shear beam load cell has a 6-meter shielded 4-conductor cable.



Suggested related products

A highly performing weighing system must be accurate, perfectly calibrated and well maintained. In order to improve the load cell performance and to optimize its functioning, you may need the following products:

Weight Transmitter [DAT 1400](#)

Weight Indicator [MCT 1302](#)

Mounting kits [MKX ®](#)

Tester 1008 [TESTER 1008](#)

Junction Box [CGS4-C](#)

Double Shear Beam Load Cell [DDR](#)

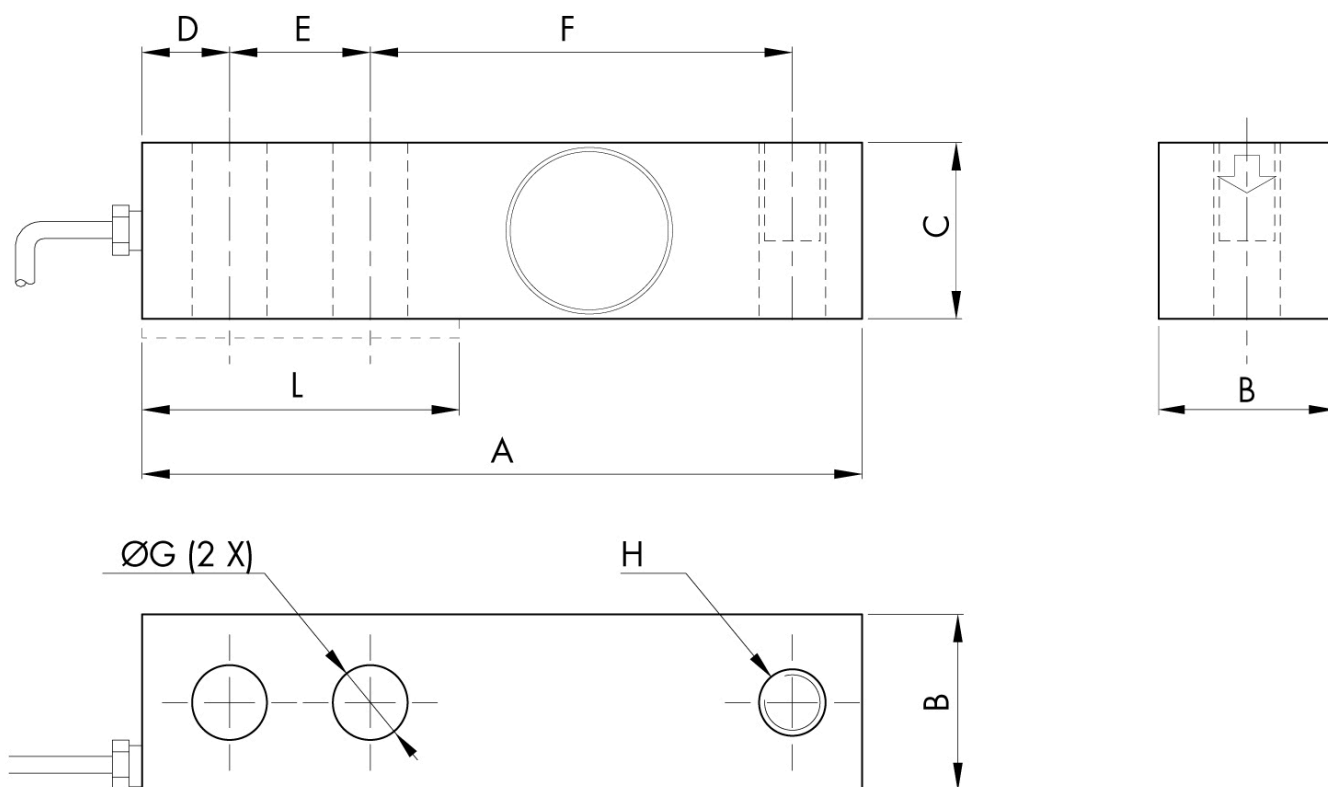
All indicated data may be changed without notice.
All the measures indicated are expressed in millimeters (mm).

Technical specifications

PWS1620251216

Rated Load (RL):	0.5, 1, 2, 5 t
Combined error:	±0.023 % RO
Repeatability:	±0.01 % RO
Creep (30 minutes):	±0.02 % RO
Safe overload:	150 % RL
Ultimate overload:	300 % RL
Clamping force without any load:	M12= 75Nm; M18= 500Nm
Material:	Stainless steel
Degree of protection:	IP67
Accuracy class:	3000 OIML
Deflection:	0.2 ÷ 1.4 mm
Compensated Temperature:	-10 ÷ +40°C
Temperature range:	-35 ÷ +65°C
Temperature effect on zero balance:	±0.018 % RO/10°C
Temperature effect on output:	±0.014 % on output/10°C
Rated output RO:	3 mV/V ± 0.008
Zero balance:	±1 % RO
Insulation resistance:	> 5000 MOhm
Input resistance:	350 ±3.5 Ohm
Output resistance:	350 ±3.5 Ohm
Recommended input:	5 ÷ 12 Vdc/ca

All indicated data may be changed without notice.
 All the measures indicated are expressed in millimeters (mm).



Electrical Connections

+Excitation	Red
-Excitation	Black
+Signal	Green
-Signal	White
Shield	Cable Shield

CAPACITY kg

	500-2000	5000
A	130	171
B	31.32	36.8
C	31.32	36.8
D	15.7	19.05
E	25.4	38.1
F	76.2	95.25
G	13.4	20.65
H	M12x1.75	M20x2.5
L	57	76

All indicated data may be changed without notice.
All the measures indicated are expressed in millimeters (mm).