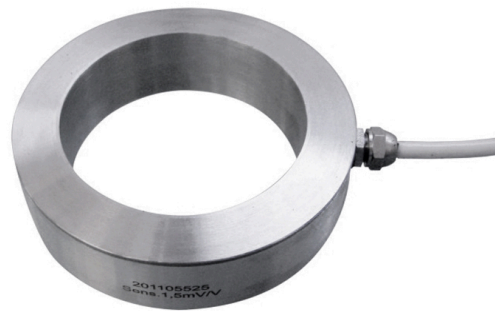


## General information

PWS17220260416

The PSRT toroidal annular load cell, made of stainless steel, is used to check the stringing of tie rods or bolts for rock or soil riveting. Furthermore, the toroidal annular cells show any release or tension overloads in the retaining walls. Pavone Systems offers a customization service of the load cells according to the applications.



## Suggested related products

A highly performing weighing system must be accurate, perfectly calibrated and well maintained. In order to improve the load cell performance and to optimize its functioning, you may need the following products:

**Weight Transmitter** [UWT 6008](#)

**Weight Transmitter** [DAT 1400](#)

**Weight Indicator** [MCT 1302](#)

All indicated data may be changed without notice.  
All the measures indicated are expressed in millimeters (mm).

## Technical specifications

PWS17220260416

<b>Rated Load (RL):</b>	1 ÷ 400
<b>Combined error:</b>	±0,15 % Full scale
<b>Repeatability:</b>	±0,02 full Scale
<b>Creep (20 minutes):</b>	±0,02 % full scale
<b>Safe overload:</b>	150 % RL
<b>Ultimate overload:</b>	> 300 % RL
<b>Material:</b>	Stainless Steel 17.4 PH
<b>Degree of protection:</b>	IP65-67
<b>Compensated Temperature:</b>	-10 ÷ + 50 °C
<b>Temperature range:</b>	-20 ÷ + 70 °C
<b>Temperature effect on zero balance:</b>	±0,005 % full scale/°C
<b>Temperature effect on output:</b>	±0,005 % full scale/°C
<b>Excitation voltage:</b>	2 ÷ 15 Vdc/ca
<b>Rated output RO:</b>	1,5 - 2 mV/V
<b>Input resistance:</b>	700 ±20 Ohm
<b>Output resistance:</b>	700 ±5 Ohm
<b>Isolation:</b>	> 5000 MOhm

All indicated data may be changed without notice.  
All the measures indicated are expressed in millimeters (mm).