

General information

PWS5020260402

The P SPRX pin load cell is made of stainless steel and offers maximum resistance to impacts and overloads. The operation of the P SPRX load cell is double-ended shear beam. The P SPRX cell is insensitive to side loads and it has been designed for shooting, weighing or anti-overhead systems for overhead cranes. The P SPRX pin load cell can be customized and it has a "high temperature" version.



Suggested related products

A highly performing weighing system must be accurate, perfectly calibrated and well maintained. In order to improve the load cell performance and to optimize its functioning, you may need the following products:

Weight Transmitter [DAT 1400](#)

Weight Indicator [MCT 1302](#)

Tester 1008 [TESTER 1008](#)

Junction Box [CGS4-C](#)

Electronic Overload Guard [LC 200](#)

Electronic Overload Guard [LC 300](#)

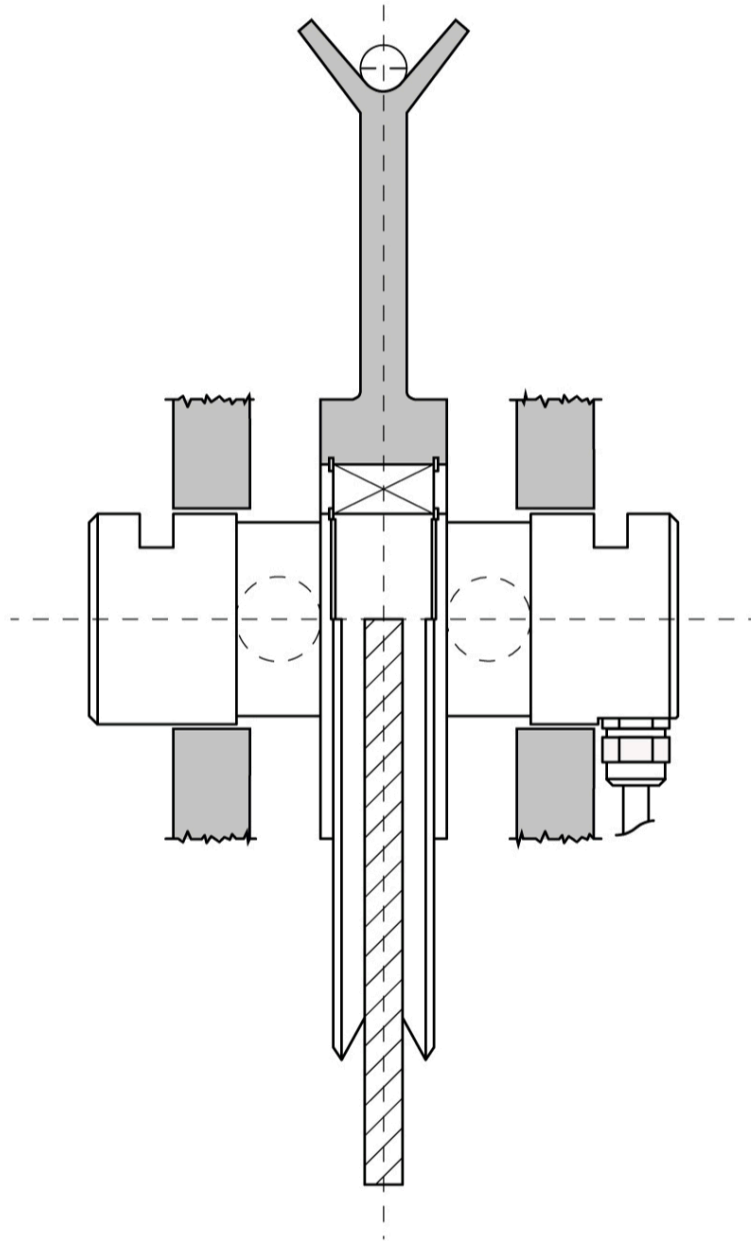
All indicated data may be changed without notice.
All the measures indicated are expressed in millimeters (mm).

Technical specifications

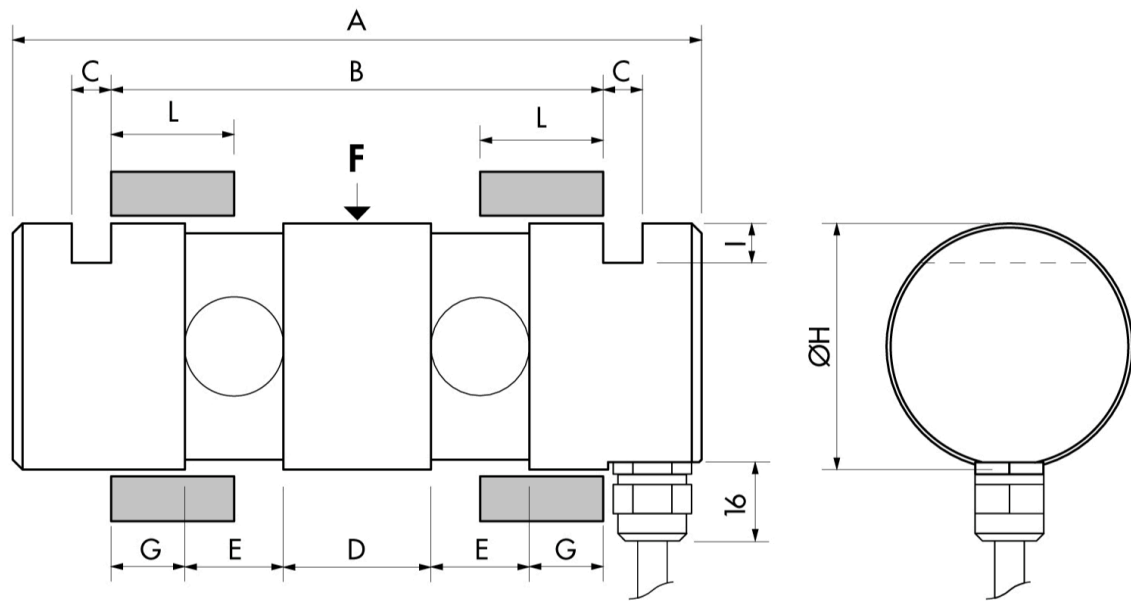
PWS5020260402

| | |
|--------------------------------------------|------------------------------------------|
| Rated load (RL): | PRN 500 ÷ 4000 kg; PRX 5000 ÷ 100.000 kg |
| Combined error: | < ±0.1 % RO |
| Repeatability: | < ±0.02 % RO |
| Creep (20 minutes): | ±0.03 % RO |
| Safe overload: | 150 % RL |
| Ultimate overload: | 300 % RL |
| Material: | Stainless steel |
| Degree of protection: | IP65 |
| Deflection: | 0.4 mm |
| Compensated Temperature: | -10 ÷ +50°C |
| Temperature range: | -20 ÷ +70°C |
| Temperature effect on zero balance: | < ±0.005 % RO/°C |
| Temperature effect on output: | < ±0.005 % RO/°C |
| Rated output RO: | 1 mV/V ±0.1 % |
| Zero balance: | < ±2 % RO |
| Insulation resistance: | > 5000 MOhm |
| Input resistance: | 700 ±20 Ohm |
| Output resistance: | 700 ±10 Ohm |
| Recommended input: | 5 ÷ 15 Vdc/ac |

All indicated data may be changed without notice.
 All the measures indicated are expressed in millimeters (mm).



All indicated data may be changed without notice.
All the measures indicated are expressed in millimeters (mm).



| MODEL | RATED LOAD (KG) | A | B | C | D | E | G | ØH | I |
|--------------|------------------|-----|-----|----|-----|----|----|-----|----|
| PRX (ex PRN) | 500 - 4.000 | 116 | 80 | 6 | 20 | 20 | 10 | 30 | 6 |
| PRX | 5.000 - 20.000 | 140 | 100 | 8 | 30 | 20 | 15 | 50 | 8 |
| PRX | 30.000 - 60.000 | 290 | 220 | 20 | 100 | 30 | 30 | 80 | 15 |
| PRX | 80.000 - 100.000 | 305 | 235 | 20 | 115 | 30 | 30 | 100 | 15 |

All indicated data may be changed without notice.
 All the measures indicated are expressed in millimeters (mm).