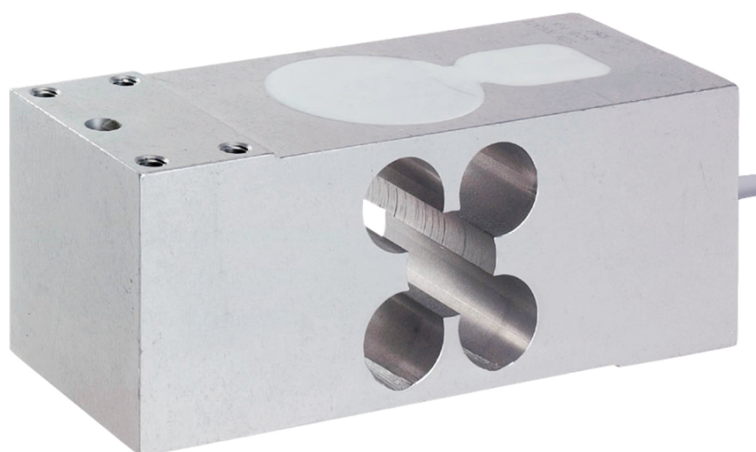


General information

PWS33420240319

The Model 1252 is a high capacity single-point load cell fully interchangeable with the Model 1250, designed for direct mounting of the weighing platform or side cell applications. Resulting from simpler scale construction, the Model 1252 is a cost-effective load cell for use in counting, weighing, bench or floor scale productions. A special humidity-resistant protective coating assures long-term stability over the entire compensated temperature range. This load cell has Factory Mutual approval and IP66 protection. The two additional sense wires feed back the voltage reaching the load cell. Complete compensation of change in the lead wires resistance, due to temperature change and/or cable extension, is achieved by feeding this voltage into the appropriate electronics



Suggested related products

A highly performing weighing system must be accurate, perfectly calibrated and well maintained. In order to improve the load cell performance and to optimize its functioning, you may need the following products:

Weight Transmitter [DAT 1400](#)

Weight Indicator [MCT 1302](#)

Tester 1008 [TESTER 1008](#)

Junction Box [CGS4-C](#)

All indicated data may be changed without notice.
All the measures indicated are expressed in millimeters (mm).

Technical specifications

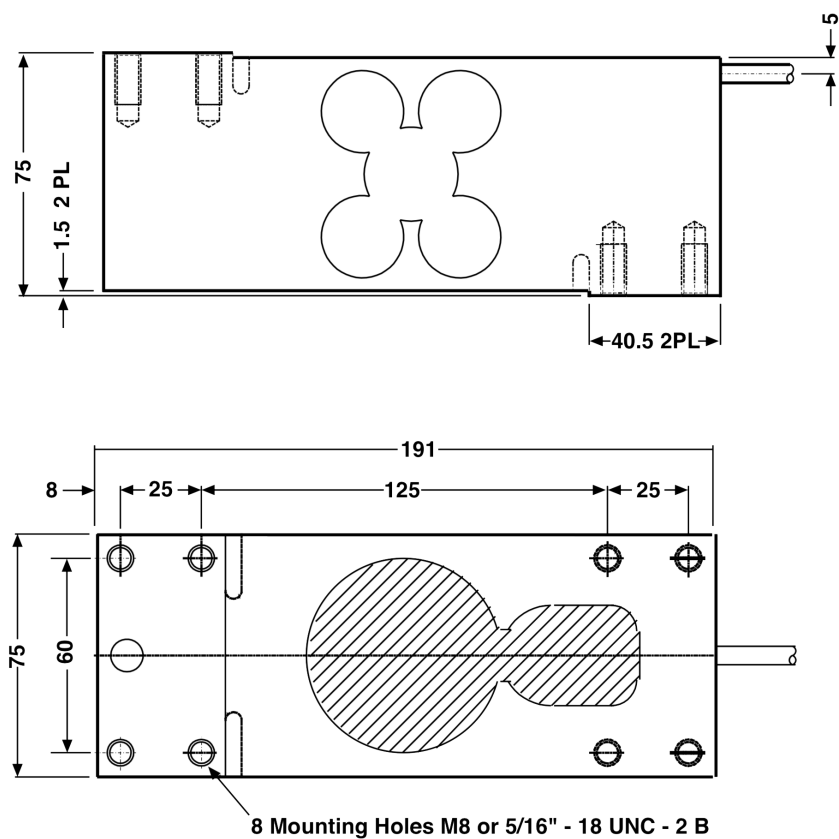
PWS33420240319

Rated Load (RL):	75, 100, 150, 200, 300, 500, 635 kg
Ultimate overload:	300 % RL
Material:	Plated (anodized) aluminium
Degree of protection:	IP65
Accuracy class:	C3
Compensated Temperature:	-10 ÷ +40°C
Temperature range:	-30 ÷ +70°C
Temperature effect on zero balance:	±0.010 % (Non Approved); ±0.004 % (C3) RO/°C
Temperature effect on output:	±0.0030 % (Non Approved); ±0.0010 % (C3) RO/°C
Rated output RO:	2 mV/V
Zero balance:	±0.20 mV/V
Insulation resistance:	> 2000 MOhm
Input impedance:	415±15 Ohm
Maximum input voltage:	15 Vdc or Vac rms
Nominal input voltage:	10 Vdc or Vac rms
Cable Length:	3 m
Load plan:	600x600
Output impedance:	350±3 Ohm

All indicated data may be changed without notice.
All the measures indicated are expressed in millimeters (mm).

Off Center load cell **Tedea 1252**

available with certification • ATEX • OIML • FM • IECEx



Wiring Schematic Diagram

BALANCED BRIDGE TEMPERATURE COMPENSATION

+VE INPUT	Green
+VE SENSE	Blue
+VE OUTPUT	Red
-INPUT	Black
-VE SENSE	Brown
-OUTPUT	White

All indicated data may be changed without notice.
All the measures indicated are expressed in millimeters (mm).