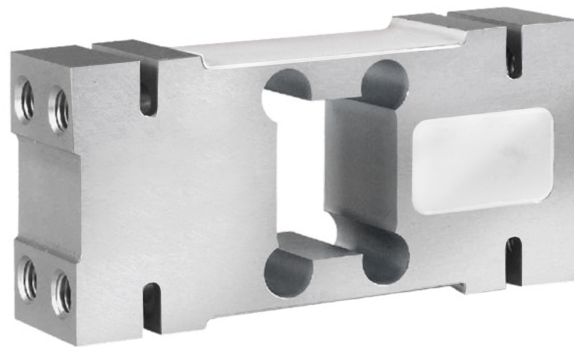


## General information

PWS16320260619

The off center load cell PSZTL, built in aluminum, is robust and precise and is ideal for large single-cell platforms. Its weight capacity can reach up to 2000 kg. The PSZTL single point load cell ensures precise weighing in all circumstances, even where the load is not positioned exactly in the center. The off-center cell is particularly used in the food packaging sector and for the construction of single-cell scales. The off center load cell PSZTL has a 6 meter long shielded cable with 6 wires.



## Suggested related products

A highly performing weighing system must be accurate, perfectly calibrated and well maintained. In order to improve the load cell performance and to optimize its functioning, you may need the following products:

**Weight Transmitter** [UWT 6008](#)

**Weight Transmitter** [DAT 1400](#)

**Weight Indicator** [MCT 1302](#)

**Tester 1008** [TESTER 1008](#)

**Junction Box** [CGS4-C](#)

All indicated data may be changed without notice.  
All the measures indicated are expressed in millimeters (mm).

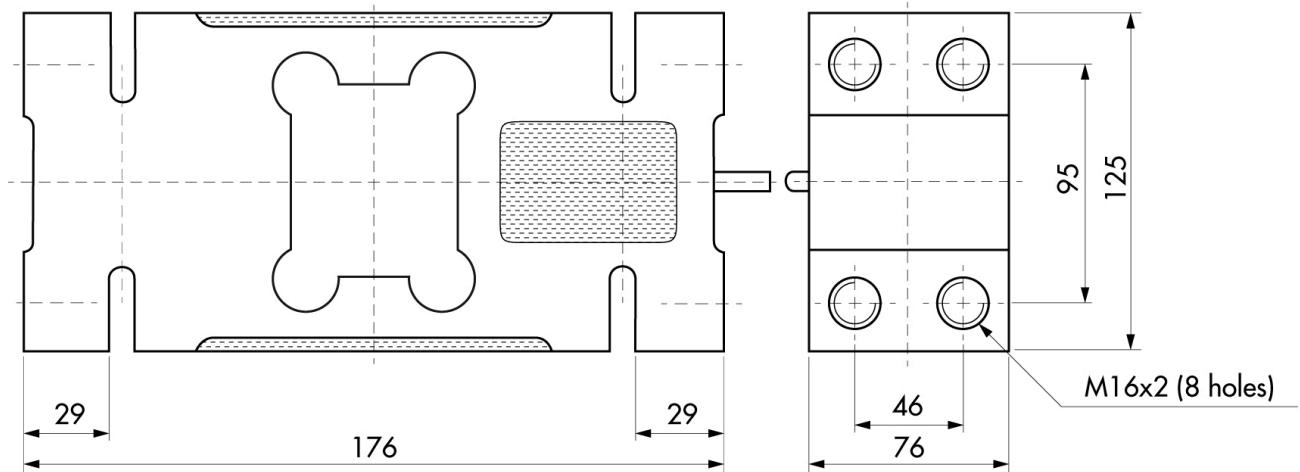
## Technical specifications

PWS16320260619

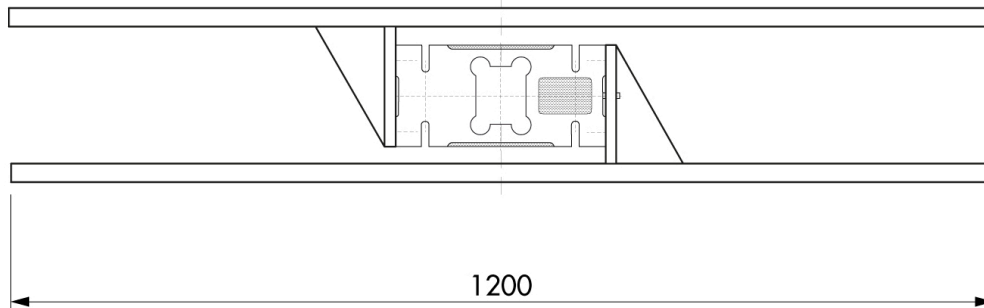
|  |               |
|--|---------------|
| <b>Rated load (RL):</b>                    | 1000, 2000 Kg |
| <b>Repeatability:</b>                      | ±0.01 % RO    |
| <b>Input sensitivity:</b>                  | 2 mV/V ±10 %  |
| <b>Creep (20 minutes):</b>                 | ±0.02 % RO    |
| <b>Ultimate overload:</b>                  | 150 % RL      |
| <b>Deflection:</b>                         | 0.8 mm        |
| <b>Compensated Temperature:</b>            | -10 ÷ + 40 °C |
| <b>Temperature range:</b>                  | - 35 ÷ + 65°C |
| <b>Temperature effect on zero balance:</b> | 0.0017 % °C   |
| <b>Zero balance:</b>                       | ±1 %          |
| <b>Insulation resistance:</b>              | > 5000 MOhm   |
| <b>Input resistance:</b>                   | 406 Ohm ±6    |
| <b>Output resistance:</b>                  | 350 Ohm ±3    |
| <b>Maximum supply voltage:</b>             | 18 Volt       |
| <b>Breaking load:</b>                      | > 300 %       |
| <b>Temperature effect on full scale:</b>   | 0.0014% °C    |

All indicated data may be changed without notice.  
All the measures indicated are expressed in millimeters (mm).

### Outline Dimensions in mm



Max Platform dimensions 1200 x 1200



#### Electrical Connection

|              |        |
|--------------|--------|
| + Excitation | Red    |
| - Excitation | Yellow |
| + Sense      | Brown  |
| - Sense      | Black  |
| + Signal     | Blue   |
| - Signal     | White  |
| Shield       | Shield |

The center of loading plate and also the center of the load cell should be the same position

All indicated data may be changed without notice.  
 All the measures indicated are expressed in millimeters (mm).