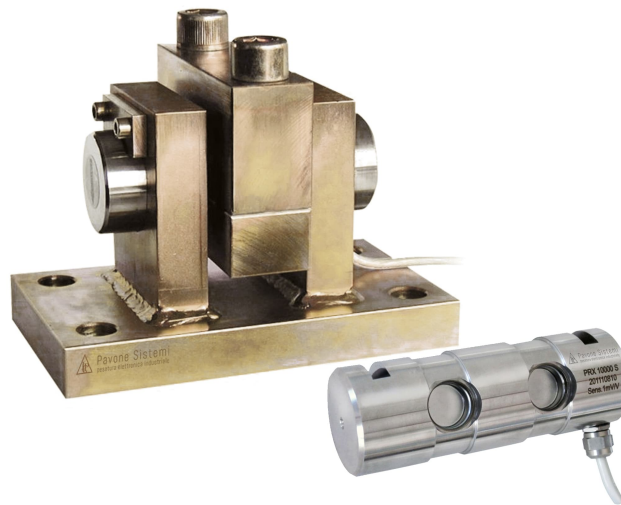


General information

PWS13620260416

The PSPRX-HT load cell is a high-strength stainless steel load cell designed for measuring forces and weighing systems. The PSPRX-HT load cell has a strong protection against impacts and overloads and it is ideal for workplaces where high temperatures are present. The PSPRX-HT cell is insensitive to side loads and it works as a double shear beam load.



Suggested related products

A highly performing weighing system must be accurate, perfectly calibrated and well maintained. In order to improve the load cell performance and to optimize its functioning, you may need the following products:

Weight Transmitter [DAT 1400](#)

Weight Indicator [MCT 1302](#)

High Temperature load cell [C2G1 HT](#)

High Temperature load cell [CMH HT](#)

High Temperature load cell [PRR HT](#)

High Temperature load cell [SB HT](#)

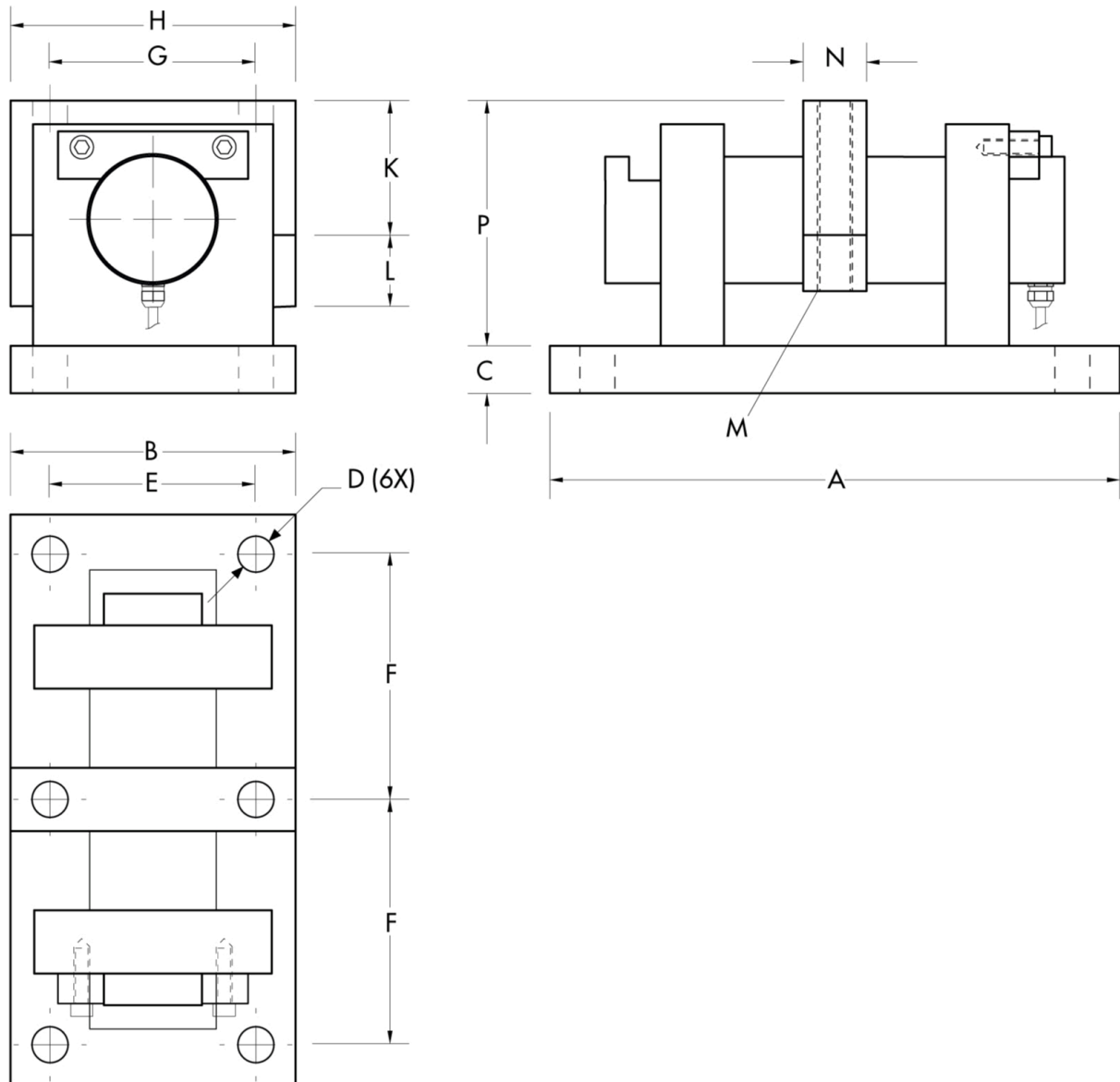
All indicated data may be changed without notice.
All the measures indicated are expressed in millimeters (mm).

Technical specifications

PWS13620260416

Rated Load (RL):	5, 10, 20, 40, 60, 80, 100 t
Combined error:	< ± 0.1 % RO
Repeatability:	< ± 0.02 % RO
Creep (20 minutes):	± 0.03 % RO
Safe overload:	150 % RL
Ultimate overload:	300 % RL
Material:	Stainless steel
Degree of protection:	IP68
Deflection:	0.4 mm
Compensated Temperature:	-20 ÷ +120 °C
Temperature range:	-20 ÷ +150 °C
Temperature effect on zero balance:	< ± 0.005 % RO/°C
Temperature effect on output:	< ± 0.005 % on output/°C
Rated output RO:	1 mV/V ± 0.1 %
Zero balance:	< ± 2 % RO
Insulation resistance:	> 5000 MOhm
Input resistance:	350 ± 20 Ohm
Output resistance:	350 ± 5 Ohm
Recommended input:	5 ÷ 15 Vdc/ac

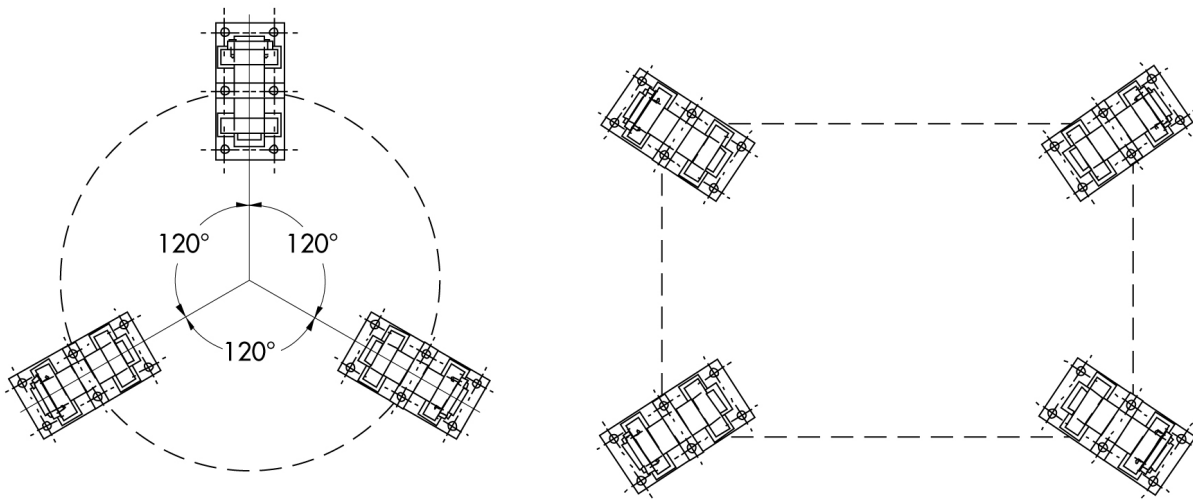
All indicated data may be changed without notice.
 All the measures indicated are expressed in millimeters (mm).



CAPACITY	A	B	C	D	E	F	G	H	K	L	M	N	P
5-30 t	200	120	30	18	80	80	85	120	60	30	M16	40	114
40-60 t	360	180	30	22	130	155	130	180	85	45	M20	40	154
80-100 t	390	200	40	26	150	170	146	200	95	70	M24	49	180

CAPACITY	50-30 t	40-60 t	80-100 t
Max lift force resistance	6080 kg	9280 kg	16120 kg
Max lateral force resistance	6220 kg	13320 kg	26210 kg

All indicated data may be changed without notice.
 All the measures indicated are expressed in millimeters (mm).



All indicated data may be changed without notice.
All the measures indicated are expressed in millimeters (mm).