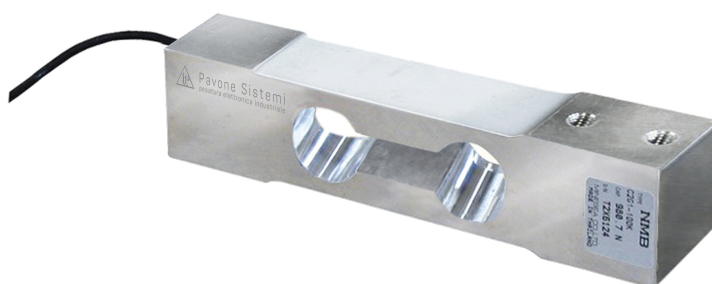


General information

PWS12820260210

The C2G1 HT load cell is suitable for high temperatures and it is particularly suitable for the construction of industrial and bench scales, piece counters and packaging machines. The C2G1 HT cell also measures correctly with off-center loads while maintaining high accuracy and reliability.



All indicated data may be changed without notice.
All the measures indicated are expressed in millimeters (mm).

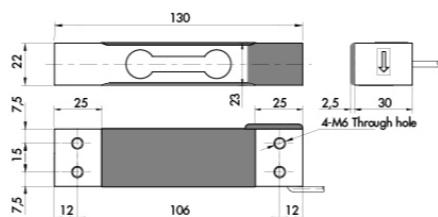
Technical specifications

PWS12820260210

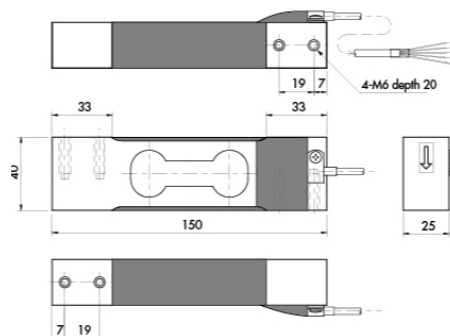
Rated load (RL):	6, 10, 12, 15, 20, 25, 30, 35, 50, 60, 100 Kg
Repeatability:	±0,02 % RO
Creep (20 minutes):	±0,02 % RO
Full scale non-Linearity:	±0,015 % RO
Safe overload:	150 % RL
Ultimate overload:	200 % RL
Material:	Stainless steel
Degree of protection:	IP64
Accuracy class:	3000 OIML - 6000 OIML
Deflection:	0.17 ÷ 0.62 mm
Compensated Temperature:	-10 ÷ +120 °C
Temperature range:	-10 ÷ +150 °C
Temperature effect on zero balance:	±0.004 % RO/°C
Temperature effect on output:	±0.0012 % load/°C
Rated output RO:	2 mV/V ±0.2
Zero balance:	< ±0.1 mV/V
Insulation resistance:	> 2000 MOhm
Input resistance:	420 ± +30/-20 Ohm
Output resistance:	350 ±5 Ohm
Recommended input:	5 ÷ 12 Vdc/ac

All indicated data may be changed without notice.
 All the measures indicated are expressed in millimeters (mm).

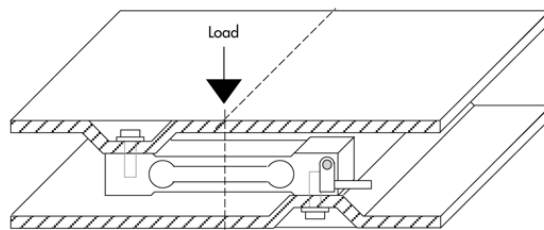
Capacity 6 ÷ 50 Kg



Capacity 60 ÷ 100 Kg



Mounting Example



TO KNOW ~

Error is within 0.02% of Rated Output applied with 1/2 of capacity at the position of 75mm of eccentricity. The center of loading plate and the center of the load cell should be the same position.

Electrical Connection

+ Excitation = RED	+ Signal = GREEN	+ Sense = BLUE
- Excitation = BLACK	- Signal = WHITE	- Sense = BROWN

All indicated data may be changed without notice.
All the measures indicated are expressed in millimeters (mm).