

## General information

PWS27820260218

The compression load cell PS24 is made of stainless steel and hermetically sealed. The compression load cell PS24 is easy to install and may be used in several weighing systems, such as tank and silage weighing systems with low profile requirements. As all compression load cells, PS24 is suitable for fixed and perpendicular loads.



## Suggested related products

A highly performing weighing system must be accurate, perfectly calibrated and well maintained. In order to improve the load cell performance and to optimize its functioning, you may need the following products:

**Mounting kits** [MKX ®](#)

**Mounting kits** [MH MOUNTING KIT](#)

**Tester 1008** [TESTER 1008](#)

**Shear beam load cells** [65023](#)

**Compression load cell** [CC3](#)

**Shear beam load cells** [SBR](#)

All indicated data may be changed without notice.  
All the measures indicated are expressed in millimeters (mm).

## Technical specifications

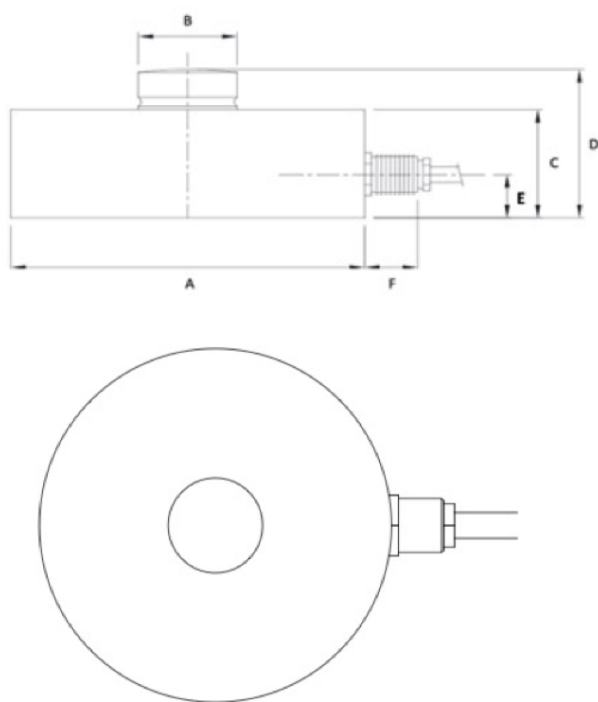
PWS27820260218

|  |  |
|--|--|
| <b>Rated Load (RL):</b>                    | 100 kg - 10 t, 15 t, 35 t, 50 t, 100 t |
| <b>Combined error:</b>                     | < $\pm 0.05$ % RO                      |
| <b>Repeatability:</b>                      | < $\pm 0,015$ % RO                     |
| <b>Creep (30 minutes):</b>                 | $\pm 0.048$ % RO                       |
| <b>Service load:</b>                       | 150 % RL                               |
| <b>Ultimate overload:</b>                  | 250 % RL                               |
| <b>Minimum Load:</b>                       | 0 % RL                                 |
| <b>Material:</b>                           | Stainless steel                        |
| <b>Degree of protection:</b>               | IP68                                   |
| <b>Accuracy class:</b>                     | 1000 OIML                              |
| <b>Deflection:</b>                         | < 0.6 mm                               |
| <b>Compensated Temperature:</b>            | -10 ÷ +40 °C                           |
| <b>Temperature range:</b>                  | -50 ÷ +70°C                            |
| <b>Temperature effect on zero balance:</b> | < $\pm 0.01$ % RO / 5°C                |
| <b>Temperature effect on output:</b>       | < $\pm 0.018$ % RO/5°C                 |
| <b>Rated output RO:</b>                    | 2 mV/V $\pm 0,1$ %                     |
| <b>Zero balance:</b>                       | $\pm 2$ % RO                           |
| <b>Insulation resistance:</b>              | > 5000 MOhm                            |
| <b>Input impedance:</b>                    | 800 $\pm 30$ Ohm                       |
| <b>Maximum input voltage:</b>              | 15 V                                   |
| <b>Nominal input voltage:</b>              | 10 V                                   |
| <b>No load output:</b>                     | $\pm 2$ % RO                           |
| <b>Output impedance:</b>                   | 705 $\pm 5$ Ohm                        |

All indicated data may be changed without notice.  
 All the measures indicated are expressed in millimeters (mm).

# Compression load cell **PS24**

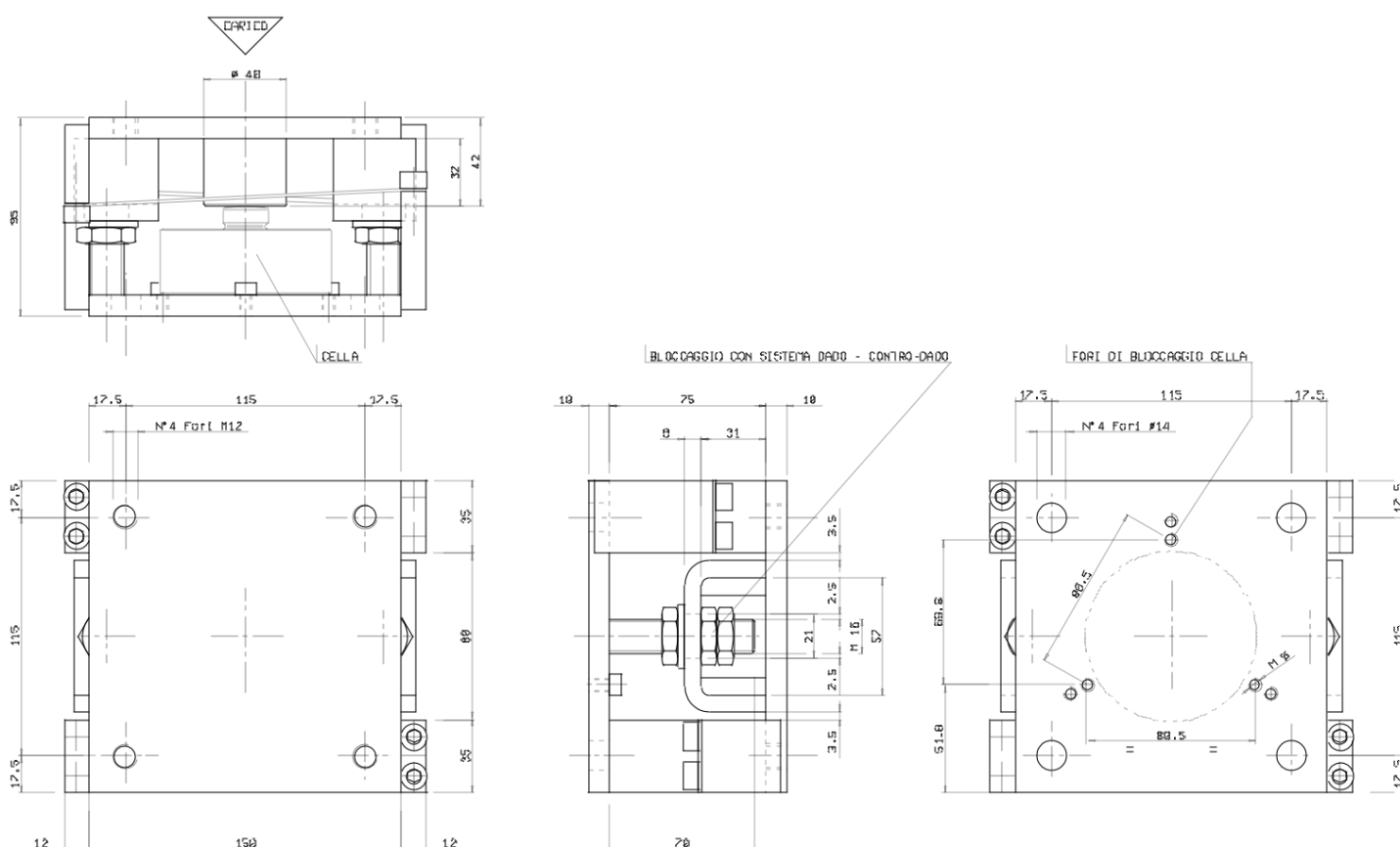
available with certification • OIML



| CAPACITY | 100 kg - 10 t | 15 t     | 35 t     | 50 t     | 100 t    |
|----------|---------------|----------|----------|----------|----------|
| A        | diam 82       | diam 100 | diam 126 | diam 164 | diam 164 |
| B        | diam 22       | diam 28  | diam 35  | diam 60  | diam 60  |
| C        | 32            | 35       | 40       | 60       | 60       |
| D        | 44            | 48       | 54       | 80       | 80       |
| E        | 15            | 15       | 15       | 15       | 15       |
| F        | 14            | 14       | 14       | 26       | 26       |

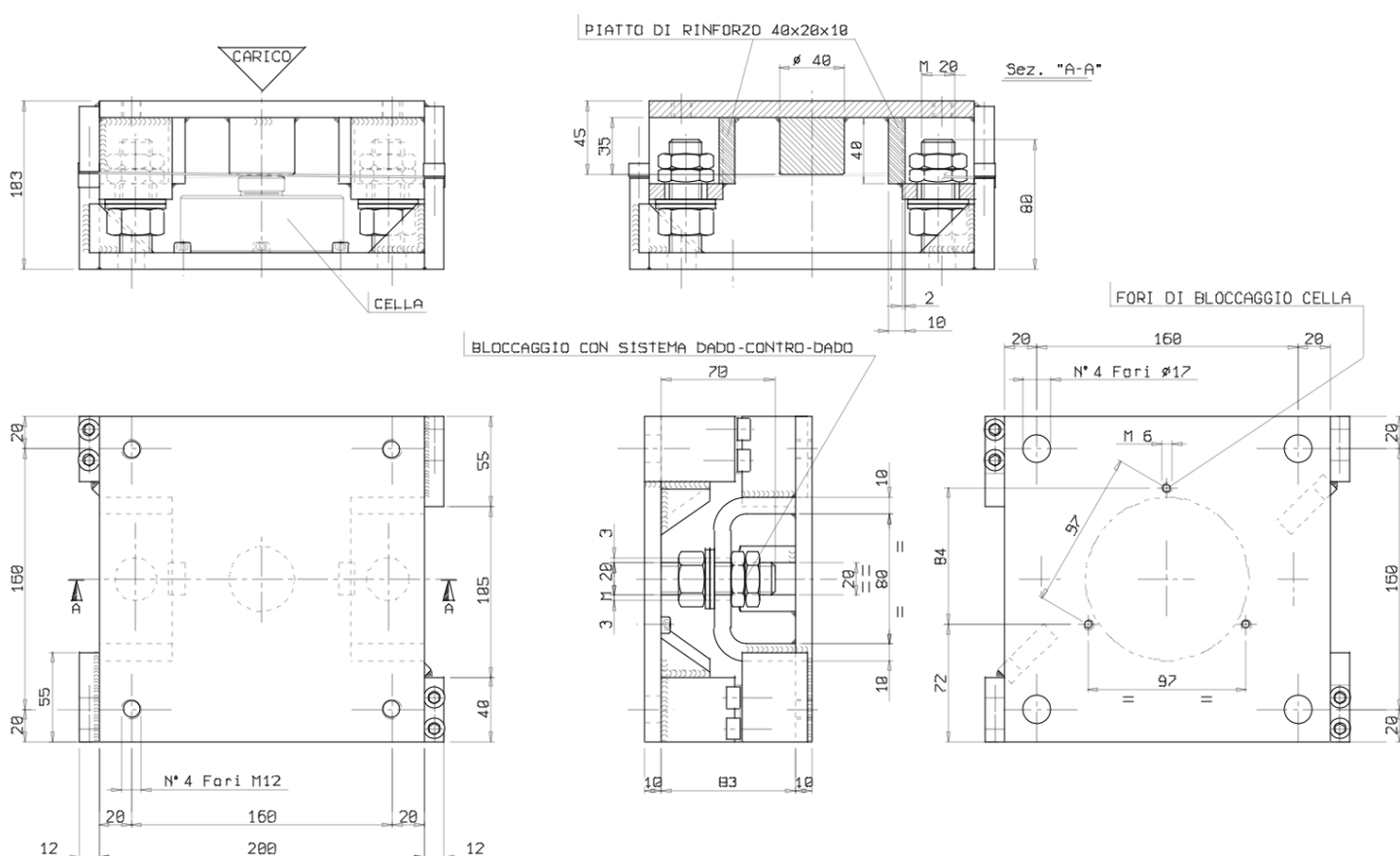
All indicated data may be changed without notice.  
All the measures indicated are expressed in millimeters (mm).

## Mounting kit with load capacity up to 10 tons



All indicated data may be changed without notice.  
All the measures indicated are expressed in millimeters (mm).

## Mounting kit with load capacity of 15 tons



All indicated data may be changed without notice.  
All the measures indicated are expressed in millimeters (mm).