

## General information

PWS2320250813

The BLH NOBEL KIS-9 load cell is extremely accurate and rugged, it withstands very high lateral forces and it is easy to install. The KIS-9 cell has a movable loading point and 5 and 10 meter 4-wire shielded cables. The BLH NOBEL KIS-9 finds application in silos, bin and hopper weighing, inventory control systems, industrial conveyors and force measurement systems. The load cell BLH NOBEL KIS-9 is also available for extreme temperature from - 40 to + 100 °C and in ATEX version if requested.



## Suggested related products

A highly performing weighing system must be accurate, perfectly calibrated and well maintained. In order to improve the load cell performance and to optimize its functioning, you may need the following products:

**Weight Transmitter** [UWT 6008](#)

**Weight Transmitter** [DAT 1400](#)

**Weight Indicator** [MCT 1302](#)

**Tester 1008** [TESTER 1008](#)

**Junction Box** [CGS4-C](#)

All indicated data may be changed without notice.  
All the measures indicated are expressed in millimeters (mm).

## Technical specifications

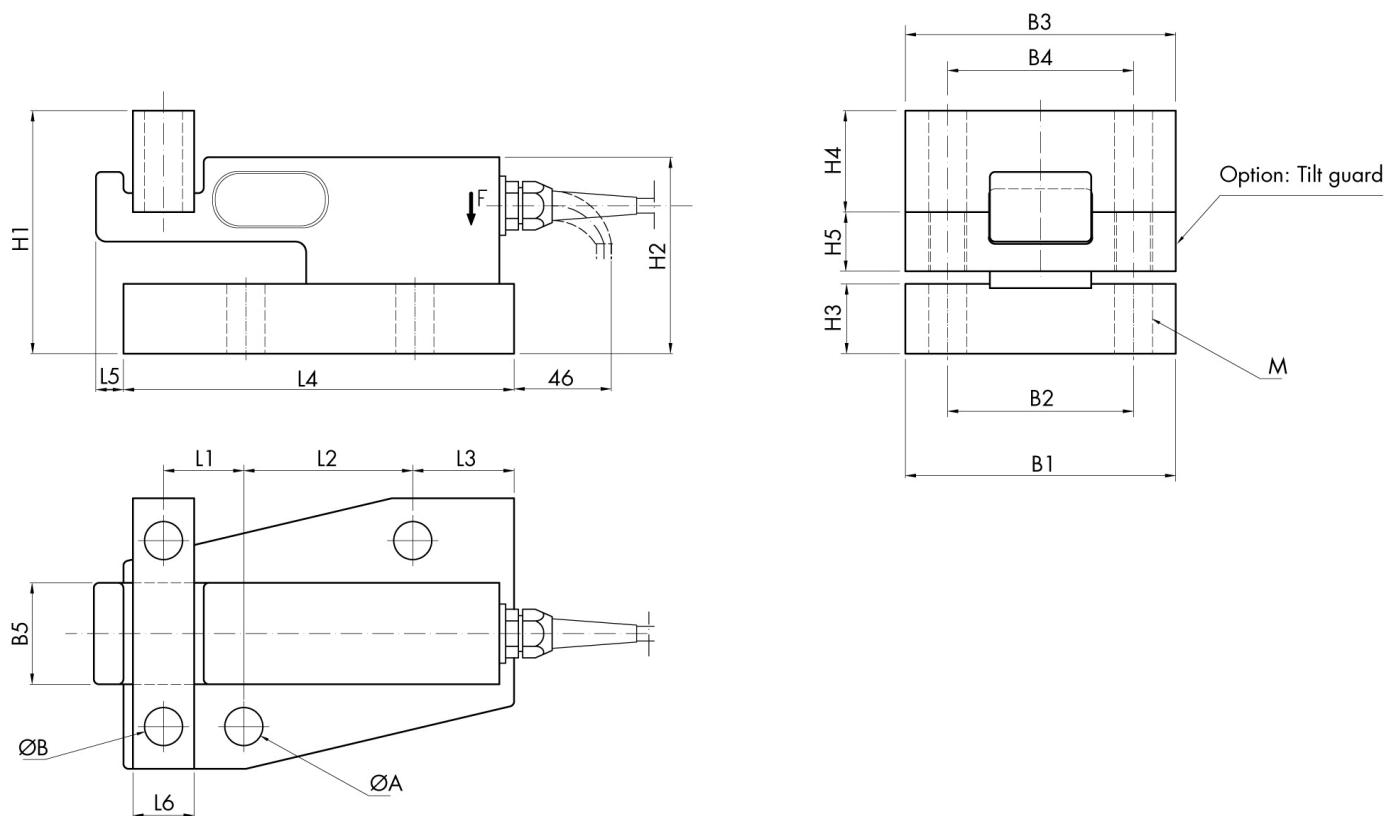
PWS2320250813

<b>Rated load RL:</b>	5, 10, 20, 50, 100 kN
<b>Combined error:</b>	±0.1 % RO
<b>Repeatability:</b>	±0.02 % RO
<b>Creep (30 minutes):</b>	±0.03 % RL
<b>Safe overload:</b>	50 % RL
<b>Ultimate overload:</b>	100 % RL
<b>Ultimate sideload:</b>	100 % RL
<b>Material:</b>	Stainless steel
<b>Degree of protection:</b>	IP67
<b>Temperature range:</b>	- 40 ÷ + 80 (+ 100 optional) °C
<b>Temperature effect on zero balance:</b>	±0.003 % RO/°C
<b>Temperature effect on output:</b>	±0.003 % of output/°C
<b>Rated output RO:</b>	1.020 mV/V ±0.25 %
<b>Zero balance:</b>	±2 % RO
<b>Insulation resistance:</b>	> 4 G Ohm
<b>Input resistance:</b>	350 ±5 Ohm
<b>Output resistance:</b>	350 ±1 Ohm
<b>Recommended input:</b>	5 Vdc/ac
<b>Maximum supply voltage:</b>	18 Vdc/ca

All indicated data may be changed without notice.  
 All the measures indicated are expressed in millimeters (mm).

## BLH Nobel load cell **KIS-9**

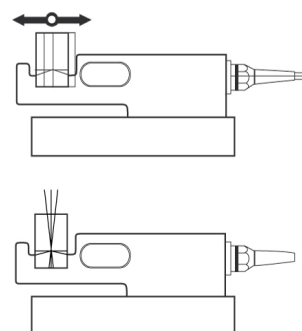
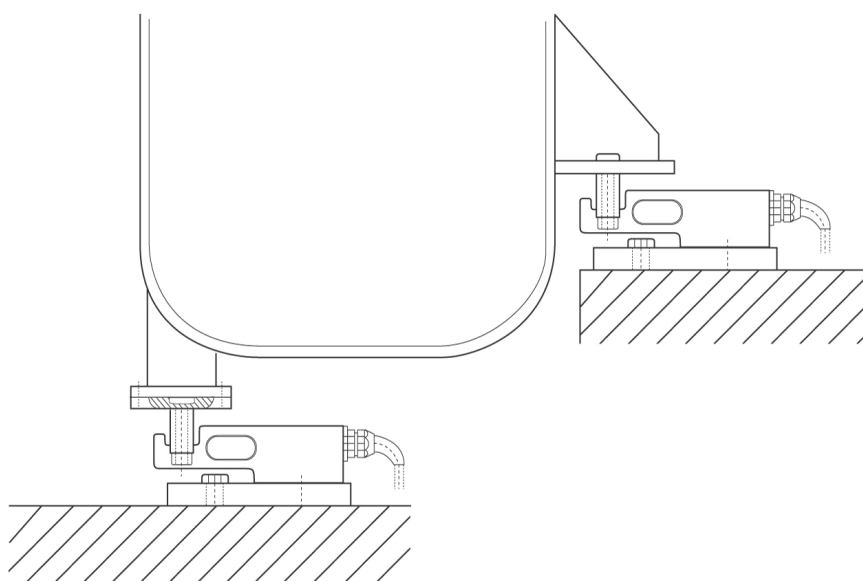
available with certification • EAC • ATEX • IECEX



RANGE kN	L1	L2	L3	L4	L5	L6	ØA	ØB	B1	B2	B3	B4	B5	H1	H2	H3	H4	H5	M
5-10-20	27	72	41	154	9	19	14	11	96	62	80	56	30	80	67	19	37	20.5	M10
50	38	80	48	185	14	29	18	18	128	88	128	88	48	115	93	33	48	28	M16
100	48	122	25	220	17	48	22	22	160	120	160	120	62	130	108	38	53	33	M20

All indicated data may be changed without notice.  
All the measures indicated are expressed in millimeters (mm).

## INSTALLATION EXAMPLES



All indicated data may be changed without notice.  
All the measures indicated are expressed in millimeters (mm).