

Technical specifications

PWS16720250722

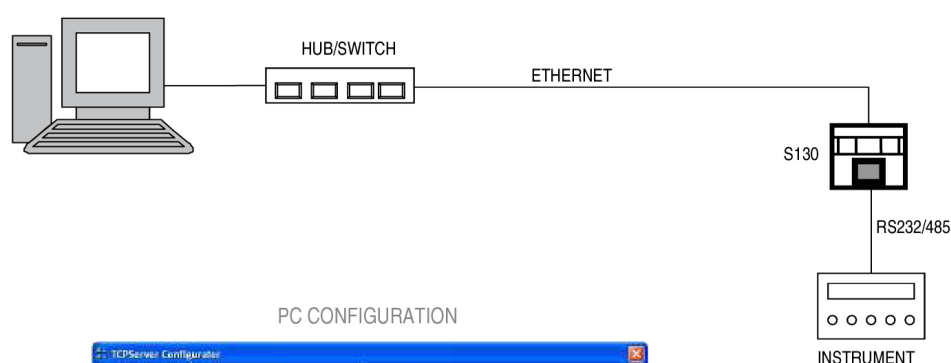
The Serial Converter S130 Profibus/Serial Bridge is used for the serial connection of various long distance units, generally from 15 m to 200 m. The Serial Converter S130 has screw terminal blocks and it may be mounted on OMEGA bar.

Material:	NORYL UL 94 V-0 flame retardant
Temperature range:	-10°C ÷ +50°C (max umidity 85% without condensation)
Storage temperature:	-20 ÷ +60 °C
Serial port:	RS232, RS485 o Profibus DP
Power supply:	10 - 30 Vdc
Regulatory compliance:	EN61000-6-2, EN61000-6-3, EN61010-1
Baud rate fieldbus:	<= 12 Mbit/sec
Dimensions:	55mm x 90mm x 58mm (l x h x p)
Baud rate:	<= 115 kb/s (default 9600 b/s)
Isolation:	Class II
Cable Lenght:	15m (RS232), 1000m (RS485)
Installation category:	Cat. II
Power consumption:	2 W (80 mA max @ 24 Vcc)

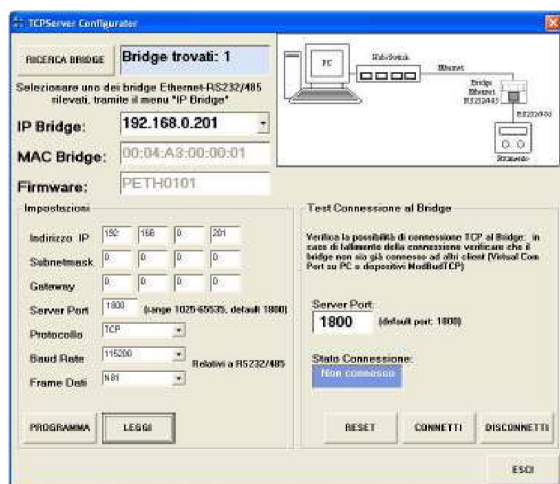


All indicated data may be changed without notice.
All the measures indicated are expressed in millimeters (mm).

ELECTRICAL DRAWING



PC CONFIGURATION



All indicated data may be changed without notice.
All the measures indicated are expressed in millimeters (mm).