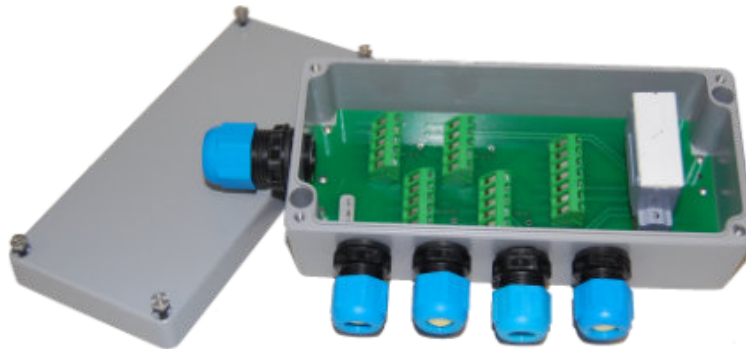


Technical specifications

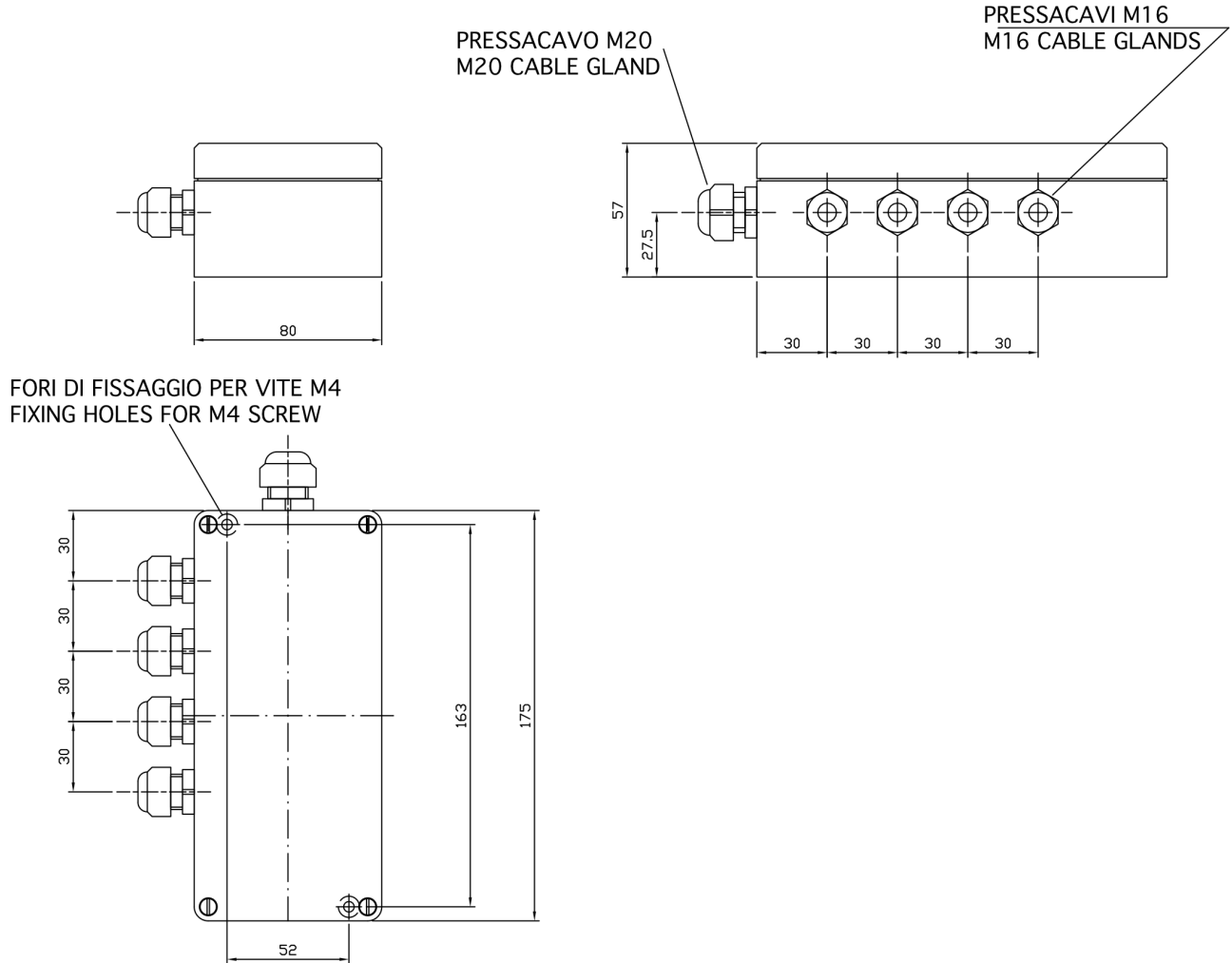
PWS29420220330

The CEM4-E ATEX junction box is able to put in communication different load cells and to synchronize the measurements, guaranteeing correct and precise weight values. The CEM4-E ATEX junction box collects the signals of the individual cells and translates them into a single signal. The CEM4-E ATEX weighing product is equipped with a cable for the connection to the 1008 tester as all the junction boxes marked Pavone Systems. This allows immediate control of the signals of the individual load cells and system diagnostics. The CEM4-E ATEX box is small and compact and this allows it to be used in all work environments in diversified sectors and to be positioned below the platforms.

Temperature range:	-30 ÷ +40 °C (max 85% humidity without condensation)
Storage temperature:	-30 ÷ +70 °C
Drilling template:	163 x 52 mm
Dimensions:	175 x 80 x 57 mm (L x H x P)
ATEX certified version:	Ex ia IIC T4 Ga; Ex ia IIIC T 135°C Da; -30°C ≤ Tamb ≤ +40°C



All indicated data may be changed without notice.
All the measures indicated are expressed in millimeters (mm).


LOAD CELLS COLOUR CODE

	SENSORTRONICS	NONBEL	MINIBEA	PAVONE
+Exc	Red	Red/Green	Red	Red/Blue
-Exc	Black	Black	White	Black/Brown
+Sgn	Green	Green/White	Green	Green
-Sgn	White	Red/White	Blue	White
Shd	Shield	Shield	Shield	Shield

All indicated data may be changed without notice.
 All the measures indicated are expressed in millimeters (mm).